

Name _____ Date _____

Phone _____ Email _____

Once completed email to info@homedesignspartners.com

**STEP
1**

THE SHAPE OF YOUR ROOM

Draw the shape of your room. Be sure to include any major structural or obstacles such as stairs, bumpouts or columns.

**STEP
2**

ADD THE DETAILS

Show any openings such as windows and doorways. Be sure to include any items that cabinets will need to be installed around. Labeling the items will help the designer understand what items go where.

**STEP
3**

MEASURE

Now is the time to measure. Measure all of the openings. It is important to measure from the outside edge to the outside edge. If you are uncomfortable with precise measurements, feel free to round to the nearest 1/4 inch. Remember this is just to get started. If open concept measure to the room's end.

**STEP
4**

DRAW YOUR LAYOUT

Most clients already have a good idea of where they would like the majority of their items in their space. Feel free to draw out your ideas.

**STEP
5**

SNAP PICTURES

One of the most helpful tools that can be provided is photos of your existing space! Please submit photos with your drawing.

**STEP
6**

SUBMIT

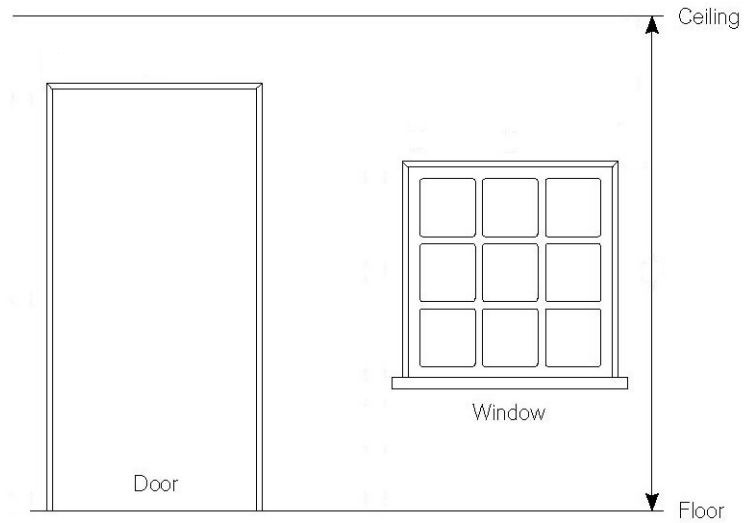
Please submit the measuring guide, drawings, and photos, as soon as possible, so there isn't a delay during design time. Please email to info@homedesignspartners.com.

HOW TO MEASURE YOUR SPACE

A rough drawing of your space is useful and will help us in the design process. See below for a sample floor plan. Once you have dimensions and a basic sketch of your space, transfer the information to the grid on the next page of this guide. Here are some helpful hints to get you started.

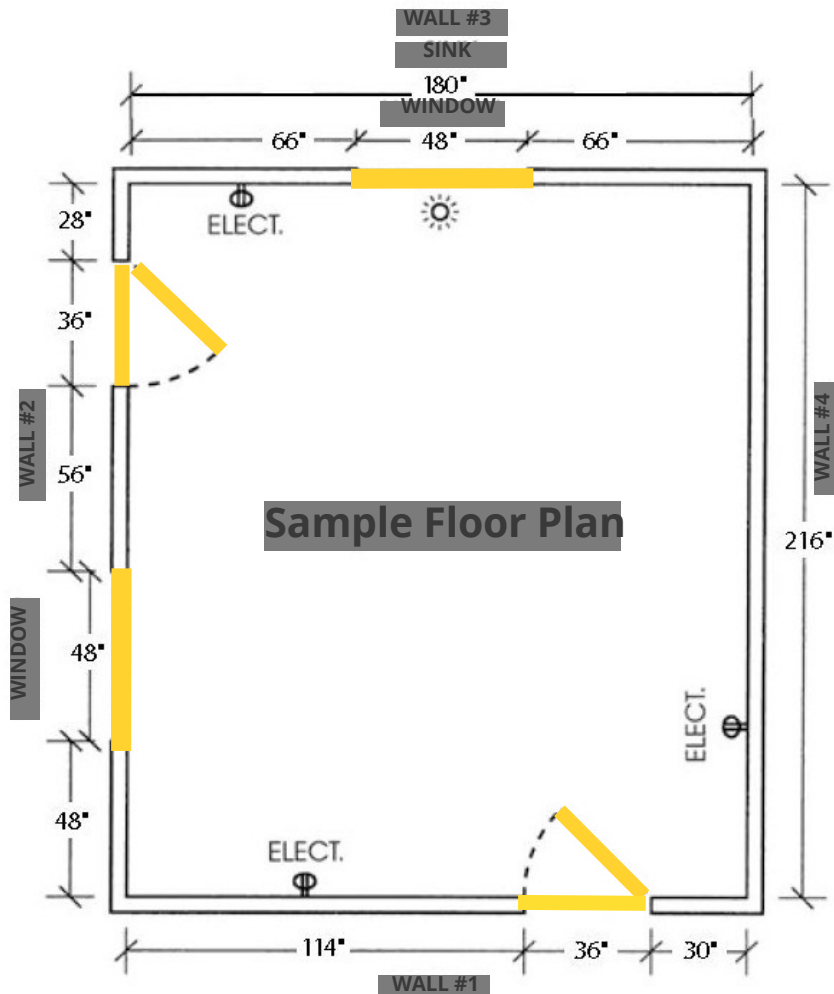
TIPS FOR MEASURING YOUR SPACE

- Use a pencil to facilitate easy changes
- Measure in inches only
- Be sure to note all fixtures and utilities
- Also note all electrical outlets/switches
- Include location and size of windows and doors
- Note the size and location of existing appliances
- Indicate which way doors swing and into what rooms
- Breaks in walls and obstructions should also be noted
- Denote ceiling height and indicate any transitions, soffits and/or vents

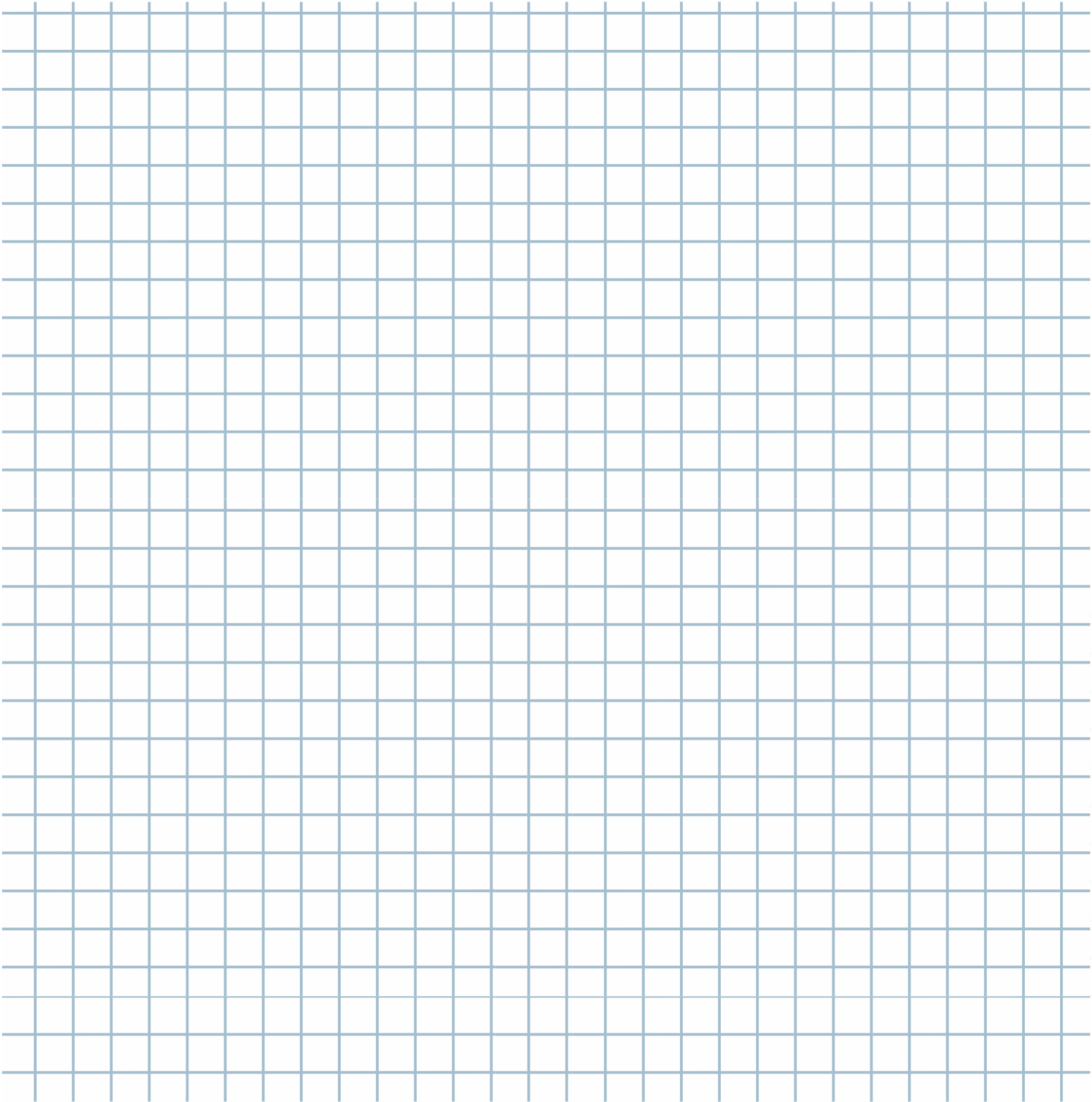


Ceiling Height : _____

Soffit: Yes / No Height: _____



Write clearly; please draw the layout of your room including the dimensions of appliances, all walls, doors, windows, and other openings. Please include casing sizes and the height of windows from the floor and down from the ceiling. **Please record dimensions in INCHES.** You are responsible for accuracy of these measurements. The more accurate and detailed information you provide to us, the better.

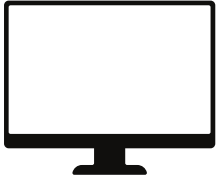


Your drawing doesn't have to be perfect or to scale – just neat!

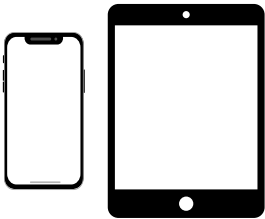
You have provided and are responsible for all measurements. Please verify all dimensions prior to purchase.

www.homedesignspartners.com • (219) 208-6203 • info@homedesignspartners.com

Almost Finished! Please forward all of the information to us.

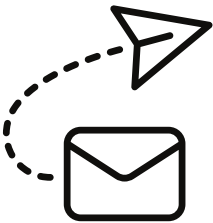


Email: info@homedesignspartners.com



Smart Phone or Tablet

Take a picture of the form and your drawing and email them to:
info@homedesignspartners.com



Don't forget the pictures! Please send photos to
info@homedesignspartners.com

